

Bougainville Copper Concentrates

VOLUME TWO / NUMBER TWENTY-TWO November, 1972

Old and New

An interesting view of the old and new roads with camp 10 shown at the bottom right hand corner and Moroni village, centre.

agons 30
ddogs 22
vils 9
touchables 3

120 d. Dragons 1 6 83
112 d. Untouchables 1 3 72

touchables 21
vils 16
ddogs 15
agons 12

been thrown wide open with a couple in round 4, and the competition is a great climax.

and You

caused by sporozoa (parasites) um. It is characterized by periodic; various degrees of of spleen; and various syndromes ysiological and pathological n organs including the brain, neys.

ria is still our number one today in Papua New Guinea.

Panguna seems to be on the y morbidity statistics show ries from month to month but , this is coupled by increase loyment figures, and frequency of time exposure of al infections.

igenous male was seen at our lng from brain malaria - parently he was in the early laria and was immediately sent . for hospitalisation. It was ag lad was not on any weekly ice he arrived in Panguna. This red by the severity of that single tely sent him to hospital.

een at our medical centre with croscopically, are of foreign e people with the disease were arasites in their liver and loyed by BCP.

arasites were not seen on the ripheral blood examinations t the time of their pre- ly a few were found with positive ease developed a few days or - pre-employment medical

any questions ??

DR. D. R. JOHNS,
Acting senior medical officer

Films

PANGUNA

Thur. & Fri. Nov. 23 & 24	Lillies in the Field	Sidney Poitier Lilla Skila
Sat. & Mon. Nov. 25 & 27	Pink Panther	David Niven Peter Sellers
Sun. & Tues. Nov. 26 & 28	Seventh Dawn	William Holden Susannah York
Thurs. & Fri. Nov. 30 & Dec. 1	Hell is for Heroes (correct title could be: The Hell with Heroes	Rod Taylor Claudia Cardinale
Sat. & Mon. Dec. 2 & 4	Solomon & Sheba	Yul Brynner Gina Lollobrigida
Sun. & Tues. Dec. 3 & 5	Secret Invasion	Stewart Granger Mickey Rooney

ARAWA

Wednesday November 29	Carry on Screaming	Carry on Gang
Friday December 1	Ice Station Zebra	Rock Hudson Ernest Borgnine
Sunday December 3	Lillies in the Field	Sidney Poitier Lilla Skila
Wednesday December 6	Pink Panther	David Niven Peter Sellers
Friday December 8	Scalphunters	Burt Lancaster Shelley Winters
Sunday December 10	Seventh Dawn	William Holden Susannah York

CENT ARRIVALS

Born to Mr. & Mrs. John Everdan, electrical technician concentrator, was a daughter, Susan; to Manori and Michael Mesiko, dozer operator, mining, a daughter; Jenny and Peter Searle, engineering geologist, a daughter, Josephine; to Katu and Albert Tabira, draftsman, engineering, a son, Malcolm James; to Rai and Ruang Tegae, concentrator, a daughter, and to Cecilia and Bruno Tsigoto, motor mechanic, pit worksh a son, Godfrey.

Round 4. Ladies

Sweeties	3	9	95	d.	Swingers	1	4	62
Jetsetters	3	9	93	d.	Cuties	1	4	72

An interesting result in round 4 was the defeat of Bev Barnes by Margret Horton, in straight sets 10-9, 10-9 9-1.

Ladder:	Sweeties	27
	Cuties	16
	Jetsetters	15
	Swingers	6

Mens B

Dragons	4	12	130	d.	Devils	0	3	70
Maddogs	3	10	118	d.	Untouchables	1	5	76

Ladder:	Dragons	30
	Maddogs	22
	Devils	9
	Untouchables	3

Mens A

Devils	3	10	120	d.	Dragons	1	6	83
Maddogs	3	10	112	d.	Untouchables	1	3	72

Ladder:	Untouchables	21
	Devils	16
	Maddogs	15
	Dragons	12

The Mens A grade has been thrown wide open with a couple of surprise results in round 4, and the competition is really warming up to a great climax.

Malaria and You

Malaria is a disease caused by sporozoa (parasites) of the genus Plasmodium. It is characterized by fever, which is often periodic; various degrees of anaemia; enlargement of spleen; and various syndromes resulting from the physiological and pathological involvement of certain organs including the brain, the liver and the kidneys.

As you well know malaria is still our number one public health problem today in Papua New Guinea.

Malaria incidence in Panguna seems to be on the increase. The monthly morbidity statistics show that the incidence varies from month to month but still on the increase, this is coupled by increase in our indigenous employment figures, and dependently upon the frequency of time exposure of individuals to malarial infections.

Recently, a young indigenous male was seen at our medical centre suffering from brain malaria - cerebral malaria. Apparently he was in the early stages of cerebral malaria and was immediately sent down to Arawa Hospital for hospitalisation. It was evident that this young lad was not on any weekly antimalarial drugs since he arrived in Panguna. This evidence was also proved by the severity of that single attack which unfortunately sent him to hospital.

All cases of malaria seen at our medical centre with diagnoses confirmed microscopically, are of foreign origin. That means the people with the disease were already carrying the parasites in their liver and blood before being employed by BCP.

Although the malaria parasites were not seen on the initial microscopic peripheral blood examinations (their blood slides) at the time of their pre-employment medical (only a few were found with positive blood slides), the disease developed a few days or weeks after the initial pre-employment medical examination.

Malaria suppressive card which outlines our medical advice for 'sik malaria' and weekly antimalarial suppressant, notably chloroquin (kinin), are given to all newly employed personnel. Those who do not understand the reason for the 'card' given to them are made to understand before leaving the medical centre. To what extent this information is understood and implemented is obviously not known.

My advice is TAKE YOUR ANTIMALARIAL TABLETS REGULARLY ON A WEEKLY BASIS. Do not forget. REMEMBER MALARIA IS NOT A COMPENSATORY DISEASE.

I will be writing to you more about malaria next time when I meet you in "Concentrates". What I have stated above is only general information. In the meantime - any questions ??

DR. D. R. JOHNS,
Acting senior medical officer.

Films

PANGUNA

Thur. & Fri. Nov. 23 & 24	Lillies in the Field	Sidney Poitier Lilla Skila
Sat. & Mon. Nov. 25 & 27	Pink Panther	David Niven Peter Sellers
Sun. & Tues. Nov. 26 & 28	Seventh Dawn	William Holden Susannah York
Thurs. & Fri. Nov. 30 & Dec. 1	Hell is for Heroes (correct title could be: The Hell with Heroes	Rod Taylor Claudia Cardinale
Sat. & Mon. Dec. 2 & 4	Solomon & Sheba	Yul Brynner Gina Lollobrigida
Sun. & Tues. Dec. 3 & 5	Secret Invasion	Stewart Granger Mickey Rooney

ARAWA

Wednesday November 29	Carry on Screaming	Carry on Gang
Friday December 1	Ice Station Zebra	Rock Hudson Ernest Borgnine
Sunday December 3	Lillies in the Field	Sidney Poitier Lilla Skila
Wednesday December 6	Pink Panther	David Niven Peter Sellers
Friday December 8	Scalphunters	Burt Lancaster Shelley Winters
Sunday December 10	Seventh Dawn	William Holden Susannah York

RECENT ARRIVALS

Born to Mr. & Mrs. John Everdan, electrical technician, concentrator, was a daughter, Susan; to Manori and Michael Mesiko, dozer operator, mining, a daughter; to Jenny and Peter Searle, engineering geologist, a daughter, Josephine; to Katu and Albert Tabira, draftsman, engineering, a son, Malcolm James; to Raide and Ruang Tegae, concentrator, a daughter, and to Cecilia and Bruno Tsigoto, motor mechanic, pit workshop, a son, Godfrey.

THE MERRYMAKERS' CLUB

The Merrymakers' club has more information for interested folk. The inaugural meeting of the Arawa group was held at the home of Mrs. Yvonne Saxby at 10.30 a.m. on October 26. The president and 2 members of the Panguna group attended the meeting. Membership is low at present, but the club is hopeful of increased membership. By joining the club members are entitled to the use of a bus - if you arrange a party amongst friends and require transport you may have the use of a bus.

Dates to remember:

- November 7 - trip to Arovo for mothers and children. Cost: \$3.70 per adult and \$1 for children.
- November 14 - meeting of the Panguna group at the home of Mrs. Lenore Sandall, 23 Kupei Road.
- December 2 - Dinner dance at the tavern for all members and husbands at 8 p.m. Informal dress.
- December 5 - trip to Arovo for mothers and children. A pantomime (for the benefit of the children) will be enacted by members of the Panguna group. Father Christmas will distribute gifts to the children - these gifts to be handed to Father Christmas by the parent with the name of her child written on same.

Although the clubs will be in recess over Christmas, the president, Mrs. Val Laughton wishes to stress the following idea. If the children are bored during the latter part of the vacation and mothers have "had it" too, an outing can be arranged. Just collect a group of friends and neighbours, plus their children, your beach togs and refreshments and travel to Loloho. Please request the use of a bus prior to making arrangements. You may have your outings to Loloho beach once a week and perhaps, if drivers are available, twice a week.

For enquiries and bookings for the Arovo outings and the function at the tavern please contact Mrs. Nancy Kennedy, Kupei Road.

Next year's meetings will commence about mid-February.

DANGER - ROAD WORKS AHEAD

Now that work is underway for the widening and sealing of the port-mine access road, traffic is reduced to one-way in places. The safety and security sections would like to draw to your attention that extreme caution must be exercised by all road users when travelling on these one-way stretches, particularly at night when there is no flagman on duty.

Passing bays are being included at intervals on all one-way stretches for use at night. ALL traffic proceeding downhill towards Loloho MUST give way to traffic travelling toward Panguna, at ALL times. "Give Way" signs are positioned to this effect and must be obeyed at ALL times.

The speed limit on all one-way stretches is 15 mph (24 kph) and offenders will be liable to police and/or company disciplinary action.

Whilst it is realised that these one-way stretches will create some difficulties and made travelling between the coast and Panguna a little slower, the finished product will be beneficial to us all. So if you are sitting in your vehicle waiting for the flagman to let you through don't vent your frustrations on the poor fellow. Just think, within nine months we will be able to drive that sixteen miles without being coated in dust, or splashed with mud.....

AFTER HOURS MEDICAL TREATMENT

The company medical centre is open from 8 a.m. to 4.30 p.m. Monday through Friday and from 7.30 a.m. to 10.30 a.m. on Saturdays and Sundays.

Outside the above hours injuries will be treated at the first aid centre at the fire station. This first aid station is not set up to cope with other medical treatments such as re-dressings or dealing with minor ailments, coughs and colds, etc. All such problems should be referred to the PHD hospital which is staffed 24 hours per day to cover this type of situation.

NEW ARAWA POLICE STATION

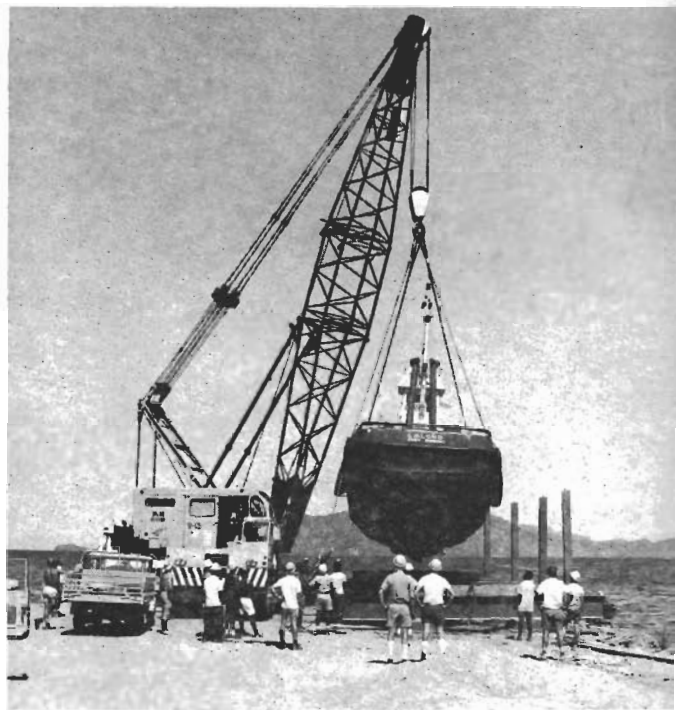
The divisional headquarters of the Bougainville Police District and the Arawa Police Station are situated on the Kieta-Loloho road in Arawa, opposite the old site of Pioneer Concrete. Registration of motor vehicles, firearms and the renewal of driving licences can be made at this station. The station is manned 24 hours a day and the telephone numbers are 951222, 951479 and 951547.

STORK NEWS

A Mortlock islander, working with Ansett, Kieta as Reservations Officer, has named his baby brother back home Ansett Taramana.

HOSPITAL NEWS

Arawa Hospital has had its first twins born recently to Ali Bidia. They are first children and both girls named Wendy and Sandy.



Above, the tug "Loloho" is being crane-lifted out of the sea at Anewa Bay to undergo repairs for the first time since its arrival towards the end of 1969.

FOR SALE

One savage cabin cruiser 40 h.p. Johnson with spare auxillary engine and trailer - \$1,400. Contact H. Wells on ext. 5-230, B-60.

toktok

A DAY IN THE LIFE OF A V.R.O.

I suppose there is a day or a period in every man's life that is unusual or a departure from his normal routine. Life would be pretty dull otherwise. Because of a change in the everyday pattern of village relations work that I experienced recently and because I have often been asked just what a village relations officer does, I thought it might be a good idea to relate the events of last week.

The general aim of village relations is defined thus:- "to identify with the people of Bougainville with a view to creating a favourable reaction towards the company's operations". This is obviously a very broad aim and embraces all sorts of activities.

Last Thursday I was required to travel by vehicle to Mabis which is near the Siwai/Nagovisi border on the west coast to collect Mr. Paul Lapun the Member for South Bougainville and Minister for Mines. He was to attend a meeting at Panguna on Friday to put various proposals to the people in areas affected by the company's operations, mainly concerning bush compensation and occupation fees.

I decided to screen a film on arrival at Mabis so, laden with projector, generator and a couple of lads who were on rest day, I set off at about 2.00 p.m.

All was plain sailing until we arrived at the Konara River about halfway between Beretemba and Morotona which, swoolen by heavy rain from the mountains the night before, was now swiftly flowing and probably five feet deep. There were three vehicles on the other side and for two and a half hours we held a shouted conversation whilst waiting for the water to subside. Quite a party atmosphere prevailed, in fact, with a bunch of naked kids making merry in the middle of the river. As we saw the temporary tide markers rise more and more from the muddy depths it was with some sense of adventure that I finally agreed to 'give it a go'. We plunged into the river and that turned out to be the extent of our action for a couple of hours. A tiring engine gave up in the middle of it all and within seconds water was swirling round our feet and finally over the front seats. Happy, laughing kids, some villagers and a couple of concerned didimen' from Kieta converged on the car and after our efforts to push it out had failed,

we were towed to the other side by a passenger vehicle. Two hours later we were on our way again after an obstinate engine finally gave way to our efforts to kick it into life.

We arrived at Mabis at 9.00 p.m. after passing the message to nearby villages that a film would be shown and by 9.30 p.m. a large, expectant crowd had gathered.

Then disaster struck! Only gurgled gasps came from the speaker of the projector! Water had obviously seeped into the projector case and it appeared that we were to view some soundless movies.

Hoping the ground would swallow me up at this stage I was amazed that the reaction of the villagers was of complete unconcern and that whatever interpretation they were placing on the story, it was producing a lot of laughter and wise comment. I was very fortunate that the film, "The Greatest Show on Earth" was packed with action and the story as such was pretty obvious. The last reel at last produced some sound and martial music descended upon us.

After the film discussions carried on for a couple of hours and after a hurried forty winks the Minister was seated and we were on our way back to Panguna.

Only a few miles out of Mabis, whilst negotiating a wet patch on what is only a very rough bush track, the car suddenly slipped to the left and we found the chassis resting on the surface with 4 wheels spinning aimlessly in ruts on either side.

It took about two hours to dig ourselves out and the most useful result of the exercise was the information that the Honourable Minister for Mines wields a pretty good shovel.

With only one other small incident requiring some juggling of the battery leads after a lucky crossing of the Pangara River, a fairly weary party arrived at Panguna at 11.15 a.m.

After a quick shower and change, the Minister appeared confidently in front of a large crowd at the meeting and I prepared to meet a group of 50 students visiting from Morotana school. A major village relations activity, visits probably elicit the most favourable response to the company's activities and the undisguised joy on the faces of children, in many cases leaving their village for the first time, as they see what we regard as the normal, everyday trappings of 20th Century life is ample evidence of the value of organized trips.

But that is yet another variation in the life of a VRO, a life that is satisfying, very rewarding and always good for a laugh.

- IAN GLANVILLE

AIRLINE TIMETABLE

Flights between Port Moresby and Kieta

(effective 29/10/72)

Due to Daylight Saving Time in Eastern states of Australia

	SATURDAY		SUNDAY		MONDAY		TUESDAY		WEDNESDAY		THURSDAY		FRIDAY	
Kieta to Port Moresby ETD Kieta	Ansett 1606 0740	TAA 2451 0800	A 1613 0905	T 2452 0640			A 1613 0905	T 2452 0600	A 1607 0735	T 2451 0840	A 1613 0905	T 2452 0600	A 1607 0600	T 2451 0840
Port Moresby to Kieta ETA Kieta	1612 1545	2450 1510			1612 1455	2450 1615	1612 1545			2450 1555	1612 1545			2450 1555



Join the jet set

People wanting to travel overseas are always asking for information on international travel and Qantas, an airline operating out of Papua New Guinea to overseas countries, offers you the following:

Once the realm of the wealthy, international travel is now becoming readily accessible to an ever-expanding section of the community. With the "jumbo" age well and truly here and the supersonic era just around the corner, more and more people are looking overseas for an exciting, different and value-packed holiday.

Qantas has pioneered the introduction of low fares around the world enabling people from all walks of life to enjoy international jet holidays.

The range of holidays available is as varied as the destinations - Asia and the Orient, always fascinating; the pulsating Americas; the myriad attractions of nearby New Zealand; Europe's pageantry and sense of timelessness. Qantas makes visiting them all possible now.

All over the world, would-be voyagers were hoping that long distance air fares would be brought to more reachable levels and it was Qantas who came to the party with its remarkable "Fare Deal".

For as little as \$650.70 Qantas will fly passengers from Port Moresby to Rome and return. For only an extra \$32.20 on the airfare the through journey can be broken with one stopover along the route on either the outgoing or homeward journey. This fare allows from 45 days to six months within Europe. If time is limited, Europe is still available for \$380.00 each way between, say, Rome and Port Moresby. There are no limitations on the length of stay but with this express fare, stopovers are not permitted.

Qantas' flight QF717 takes off from Port Moresby at 9.am every Thursday for Singapore where it arrives at 2.10 pm. After an afternoon of shopping (all those duty-free bargains!) or sightseeing, through passengers join Qantas' magnificent 747B leaving at 9.45 pm for a relaxing overnight flight to Rome and London.

Many people are using Qantas' "Fare Deal" fares to visit relatives or friends in Europe. Others use them purely for a sightseeing holiday. Still others for a combination of both. But no matter the reason for visiting Europe, there is no finer or more complete way of seeing it than with a tour from the comprehensive "Europe Book".

Specifically designed to suit all travel budgets, "Europe Book" holidays take tourists to the most sophisticated cities, picturesque villages, spectacular scenery. They travel in luxury coaches and stay in quality accommodation throughout. Available exclusively to Qantas passengers



Pictures, left, from top to bottom: one of Qantas' 747s, a 747B which is a long-range and powerful version of the earlier 747s, capable of carrying 371 passengers over 5,000 miles. •Passengers relax in one of three economy class cabins on the first 747B, some of them are enjoying the in-flight musical entertainment while the steward begins serving drinks. •The Queen's horse guards in The Mall, London. •The Trevi Fountain in Rome.

these tours give an extra bonus - the services of highly trained guides who know Europe like the backs of their hands.

There are short tours, long tours, budget-priced or sheer luxury tours, tours taking in the storied cities of Madrid, Amsterdam, Venice, Heidelberg, Istanbul or lesser visited places such as Ephesus, Liechtenstein, Skjolden, Tarragona, Ljubljana. Exciting names. Exciting places. And keenly priced to suit any pocket, "Europe Book" tours bring them all within reach. For example, 9-day ski tours starting and ending in Munich cost only \$88 - 13-day coach tour visiting England, Holland, Germany, Austria, Italy, Switzerland, Franch costs from \$241, or there is a 27-day Grand Tour for \$549.

When you combine the cost of many of these holidays with the price of the "Fare Deal" ticket to Europe, the total is often much less than the normal return economy class air fare.

Of course, not everyone falls for the charms of Europe. Some prefer the delights and mysteries of the East. We will tell you about the East in the next "Concentrates".

BML Quarterly Report

The following is the text of the Bougainville Mining Limited quarterly report which was released on October 27, 1972.

The Directors of Bougainville Mining Limited announce the following information relating to the company and its 80 percent owned subsidiary Bougainville Copper Pty. Limited for the three months ended September 30, 1972.

Since commercial production of copper concentrates did not commence until April 1, 1972, no comparative figures are shown for the corresponding period of 1971. The statistics set out hereunder relate to the operating company Bougainville Copper Pty. Limited.

<u>Production</u>	<u>3 months ended September 30.</u>
<u>Ore Milled</u>	6.521 million dry metric tons
Grade - copper	0.76 percent
- gold	0.67 grams/metric ton
- silver	2.03 grams/metric ton
<u>Concentrate produced</u>	130,844 dry metric tons
Grade - copper	27.0 percent
- gold	25.42 grams/metric ton
- silver	70.00 grams/metric ton

Financial (Unaudited)

Secured loan borrowings at September 30 - \$A250,258,000
Expenditure incurred on prospecting and/or exploring - \$A nil.

Paul Korus (right), fork-lift driver from Buka, had been carting blocks and wanted to know what they were. Bob Esdaile, port operation supervisor, is seen explaining that they are zinc ingots for use in the crushing plant. These particular zinc ingots are made by Sulphide Corporation, Cockle Creek, New South Wales, which is a member of the CRA group. Bob worked at Cockle Creek before coming to Bougainville.

PRODUCTION

Production for October was the highest for any month since the mine commenced production early this year. Produced for the month was 49,121 long tons of concentrate. Previous high was in September when 44,439 long tons of concentrate was produced.

For the total year to date through October, production stood at 330,057 long tons of concentrate.

MELBOURNE CUP FESTIVITIES

Approximately 200 members and friends assembled at the starting gate on Saturday evening November 4 for what has since been described as the greatest social weekend ever seen on Bougainville.

The weekend commenced with a cup eve ball held at the Arawa Fermentary where the cup flavour was well depicted by appropriate posters, newspaper banners, a "fashions on the field" contest and a phantom Melbourne Cup call by top Australian race-caster Bert Bryant. The ball finished in the early hours of Sunday morning when the crowds left the empty champagne bottle on the track and headed for the stalls to catch a bit of shuteye before the Recovery Stakes timed to commence in just 8 hours time at the Davara.

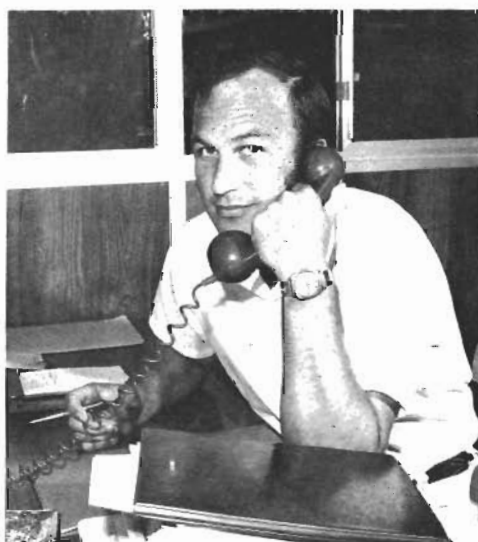
The recovery stakes commenced in the same crowd pleasing atmosphere that ended the evening before and by midday Sunday the family atmosphere of the Arawa Country Club was to the fore. While the kids enjoyed the Davara pool the oldies relaxed with a bit of the hair-of-the-dog music from the Freebeats and and Flemington style barbeque smorgasbord. During this period many were heard to say "its a tough life on Bougainville".

Came 5.00 p.m. and it was back to the stalls for a good brush down and then sleep with that tired but satisfied feeling that comes from a magnificent weekend, the organisation of which by leading stewards Feely and Wendt was beyond all anticipation and worthy of the plaudits handed out by the field.



people

Top, left to right, Vincent Leslie, customs compiler, customs office, Loloho; Veata Momo, port clerk and Capt. Jack Dalby, port superintendent. Middle, Helen Connell, relieving typist clerk; Kiap Kavanamur, trainee customs clerk, and Lionel Eteni, PDF customs compiler, all from the customs office at Loloho. Bottom, Esther Hedegus, Loloho telex/PABX operator; Dorrish Pulpulung, secretary to village relations manager and John Reid, project co-ordinator.





Above, Theresa Tondopan is seen presenting the Panguna Brownies' cheque, their donation to the Highlands Famine Relief Appeal, to Jack Karukuru, Bougainville's Deputy District Commissioner. Right, Jack Karukuru, receiving the apprentices' donation from their representatives, Urune Buza, technical training clerk, and John Oa, apprentice metal fab./welder. Below, Bob Rudkin, Arawa Lions Club president presenting Jack with the Lions Club's donation.

Highlands famine relief appeal



On Saturday, October 28, some 250 Highlanders met at Karoona Market to discuss the above subject. The following committee was elected:

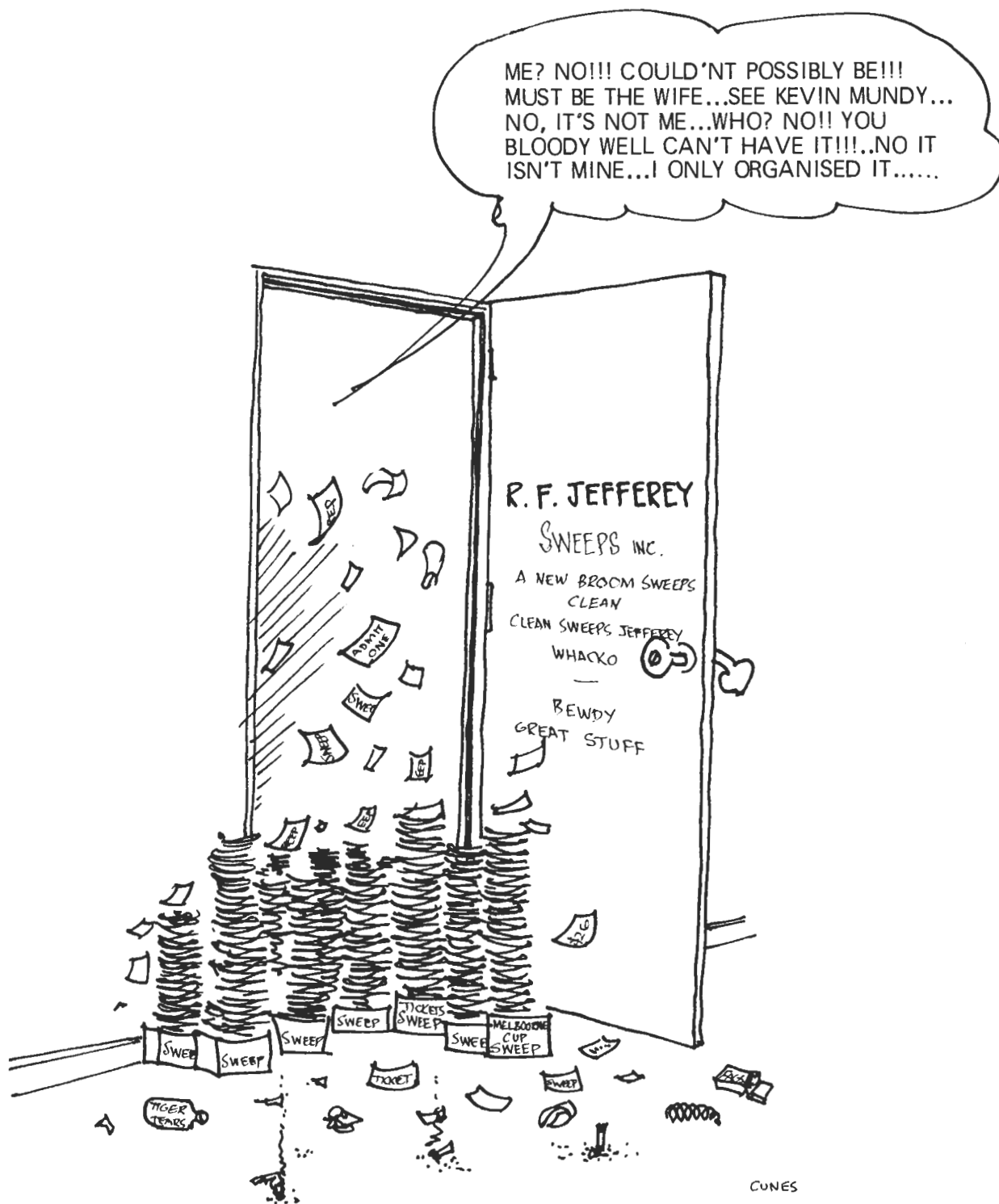
Michael Agel	President
Lakeo	Secretary
Moses Kambum	Treasurer
Leo Tondopan	Public Relations
Megame Kahento	Representing E. Highlands
Michael Mass	Representing W. Highlands
David Humube	Representing S. Highlands
John Dee	Representing Chimbu

The committee plan door knocks in town and camp areas.

A mile high view

Below is the latest aerial shot of the mine taken by our photographer, Brian Wendt, from a height of well over a mile. It is interesting to note the development of the haul road system. For those not familiar with the mine area the pit workshop is located in the bottom right hand corner and Married Hill is located in the bottom left.





Cup

fever

COLUMN THREE

In and around Panguna recently:- we were visited by Don Grove, the retiring Director for Lands, Surveys and Mines. Don has been closely associated with BCP for a good many years and his trip to the site was really to see for himself the enormous changes that have taken place during his term of office. Our best wishes to Don on his retirement...

A Capitol Foundry representative, Mr. Emil Butz was on site a couple of weeks ago. His first visit was in early '71. Nice of him to throw a party at Arovo but unfortunate that he was last to arrive to enjoy the festivities.....??

Mekere Morauta, recently appointed director of BCP made his first visit to the project, accompanied by Mr. David Morland, also a director. They lost a bit of time on the way over here by being diverted

to Rabaul after take-off from Port Moresby due to a hoax bomb scare....

Mr. & Mrs. Don Vernon back on site recently after annual leave taken touring South East Asia. Don had just enough time to unpack, make a flying visit to Moresby and back, pack again, and take off on a business trip to Africa. He will return to Panguna later in the month.....

The Arawa Country Club Melbourne Cup Festival went off with a bang. A few sore heads on the Sunday morning when everyone fronted up again for the Recovery Stakes at a well known Kieta motel. Beautiful day for splashing around in the pool but there were a few who were a bit hesitant about going in - but even a well known dentist relented in the end.....

Panguna

ORGANISATIONS:

Panguna Arts Society	Mr. K. Ambrose	5-392
Lions Club President	Mr. L. Smith	5-135
Parents & Citizens Assoc.	Mr. R. Hope	5-290
Primary School Mothers Club	Mrs. M. Blackwell	958176
Squash Club President	Mr. K. Tregauer	5-256
Secretary	Mr. M. Sullivan	5-297
Cricket Club President	Mr. J. Trezise	5-317
Scout & Guide Chairman	Mr. J. Ainsworth	5-136
Committee Guide Captn.	Mrs. J. Bissaker	5-245
Brownie Ldr.	Mrs. A. Embery	45 Kupei Rd.
Group Scout Master	Mr. J. Embery	45 Kupei Rd.

EMERGENCY DIRECTORY:

Security Emergency Control 958022.....123
(For all emergencies)

Medical BCP Medical Centre 958304.....254
Panguna Hospital 958289

Police Police Station 958222
958263

BANK:

A branch of the Commonwealth Bank is situated approx. 150 yards west of the Trade Store and is open:

Monday to Friday	9.00 a.m. - 11.30 a.m. 1.00 p.m. - 3.00 p.m.
Friday only	4.30 p.m. - 6.00 p.m.
Saturday	8.30 a.m. - 11.00 a.m.

POST OFFICE is open:

Monday to Friday	8.30 a.m. - 12.00 p.m. 1.00 p.m. - 4.00 p.m.
Saturday	8.30 a.m. - 12.00 p.m.

LIBRARY is open:

Sunday to Saturday 10.00 a.m. - 10.00 p.m.

TRADE STORE is open:

Monday to Friday	9.00 a.m. - 5.30 p.m.
Friday evening	6.30 p.m. - 8.30 p.m.
Saturday	9.00 a.m. - 12.00 p.m.

HOSPITAL:

Out-Patients:

Monday & Friday 9.00 a.m. - 11.30 a.m.

The BCP Medical Centre is open for treatments from 7.30 a.m. to 4.15 p.m. daily.

CHILD WELFARE CLINICS:

Wednesday only	8.00 a.m. - 11.45 a.m. 1.00 p.m. - 3.00 p.m.
----------------	---

CHURCH SERVICES:

Catholic Sunday 8.00 a.m. and 7.00 p.m.
Every evening 7.00 p.m.
Priest in charge - Father G. Fahey,
P.O. Box 48,
Panguna.

United Church Sunday at 9.00 a.m.
Sunday 7.00 p.m. at Camp 10
Every Wednesday 7.30 p.m.

Lutheran Services to be announced. Alternative
Sundays with Arawa.

Pastor in charge - Pastor Dean Zweck.

All services are held in the building opposite Kawerong
Flats.

Arawa

ORGANISATIONS:

Lions Club	President	Mr. R. Rudkin	5-161
Country Club		Mr. I. Baird	4-120
		Mr. G. Causon	5-327
BCP Womens' Club	President	Mrs. M. Gomara	14/195
Arawa Civic Association		Mr. R. Jeffery	5-287
Tennis Club	President	Mr. R. Bolvden	5-374
	Secretary	Mr. K. Best	5-115

POLICE STATION:

951222

TRADE STORE is open:

Monday to Thursday	8.30 a.m. - 5.30 p.m.
Friday	8.30 a.m. - 8.30 p.m.
Saturday	8.00 a.m. - 12.00 p.m.

BANK is open:

Monday to Friday	9.00 a.m. - 11.30 a.m. 1.30 p.m. - 3.00 p.m.
Saturday	8.30 a.m. - 11.00 a.m.

POST OFFICE is open:

Monday to Friday	8.00 a.m. - 12.00 p.m. 1.30 p.m. - 4.00 p.m.
Saturday	8.00 a.m. - 12.00 p.m.

LIBRARY at old Fermentary homestead is open:

Monday & Wednesday	10.00 a.m. - 12.00 p.m. 7.00 p.m. - 9.00 p.m.
Tuesday, Thursday & Friday	10.00 a.m. - 12.00 p.m. 1.00 p.m. - 4.00 p.m.
Saturday	9.00 a.m. - 12.00 p.m.

HOSPITAL:

Inter-Clinic

Monday - Friday 9.00 a.m. - 11.30 a.m.

Ante-natal Clinic

Wednesdays 8.00 a.m. - 11.30 a.m.
1.00 p.m. - 3.30 p.m.

Maternal & Child Health Clinic

Monday and Friday 8.00 a.m. - 11.30 a.m.
1.00 p.m. - 3.30 p.m.

Out-Patients:

Monday to Friday 8.00 a.m. - 4.00 p.m.
Emergencies 7 days week, 24 hours.

No visiting the hospital is allowed outside
regular visiting hours, unless special arrangements
have been made. Visiting hours are:

3.00 p.m. - 4.00 p.m.
7.00 p.m. - 8.00 p.m.

CHEMIST: 951304

Monday to Friday 8.30 a.m. - 12.30 p.m.
1.30 p.m. - 5.00 p.m.
Saturday 8.00 a.m. - 12.00 p.m.

DENTIST: Arawa 951424

Monday to Friday 8.00 a.m. - 12.00 p.m.
2.00 p.m. - 6.00 p.m.
Saturday 8.00 a.m. - 9.30 a.m.

CHURCH SERVICES:

Catholic Sundays 8.00 a.m. and
5.00 p.m. at Arawa
Fermentary.
United Church Sunday 9.00 a.m. at the
Fermentary.
Lutheran Every second Sunday at the
Fermentary.